



# Charlotte

Floor Plan: Charlotte

Square Feet: 1,451 (m.o.l.) Bedrooms: 3 Bathrooms: 2.0 Garage: 2 Car



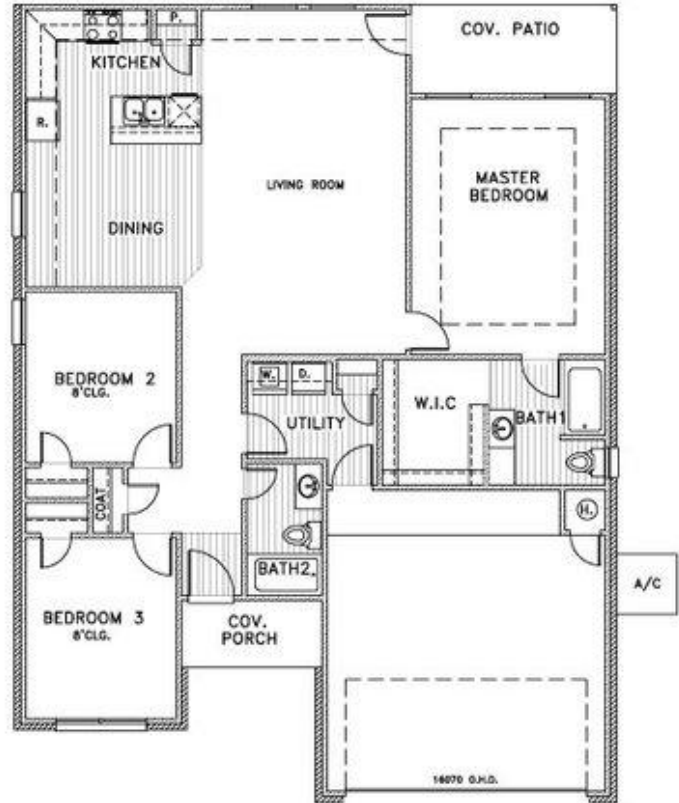
Elevation A



Elevation B

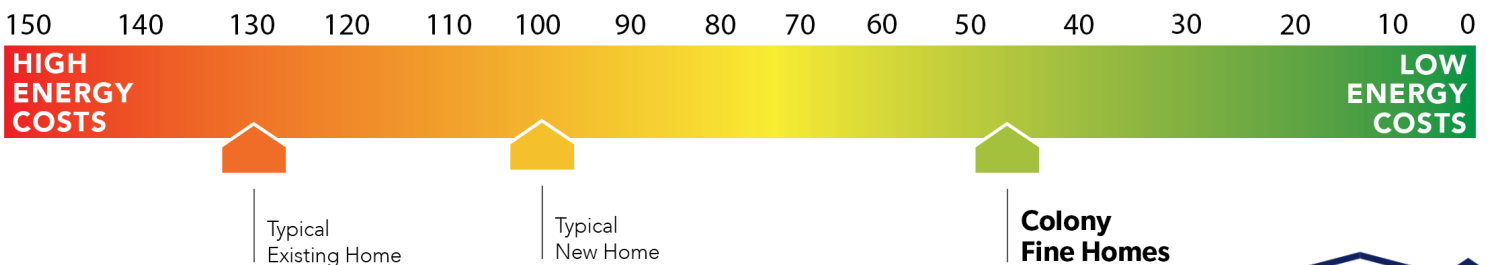


Elevation C



This floor plan with a HERS Index Rating of 49 is:

- 51% more energy efficient than a typical new home
- 81% more energy efficient than a typical existing home



Floor plans' specifications, included features, options and elevations are subject to change.





# Included Features

Floor Plan: Charlotte

Square Feet: 1,451 (m.o.l.) Bedrooms: 3 Bathrooms: 2.0 Garage: 2 Car

## Construction / Plumbing / Electrical / Mechanical

Plasma Air 600 series (homes framed after 02/01/2021)  
Exterior 2x4 stud-grade lumber walls  
14 SEER electrical central air conditioning  
Category five structured wiring (2 phone outlets)  
Electric dryer connection in utility room  
Dupont Tyvek Housewrap air and moisture barrier house wrap

Uponor AquaPex tubing for water lines  
RG6 quad shield cable wiring (two cable outlets)  
Protective ground fault interrupter circuits  
Sheetrock screwed to studs/walls  
Heat-taped condensation lines in the attic

## Bathroom

PEERLESS by Delta bathroom faucet (brushed nickel or chrome)  
Single-finish cultured marble vanities

Fiberglass shower/tub combo in hall bath  
Fiberglass shower/tub combo in master bath

## Energy Efficiency

Gas heating 95% high efficiency furnace  
Eave roof ventilation  
R-38 blown-in insulation in the attic  
Low-e Thermalpane tilt-in vinyl windows with screen  
Polycel caulking around windows, doors and joints Insulated and mastic sealed A/C ducts

HERS Index Energy Efficiency Rating  
R-19 batt insulation in sloped ceiling  
97% efficient tankless water heater  
R-15 blown-in insulation in external walls; excluding garage

## Interior Finishes

Interior doors (panel style may vary)  
Insulated entry door (panel style may vary)  
All bedrooms are box rated for ceiling fans  
Raised 9' ceiling in living areas (vary per plan and package)

Hand textured walls  
2 1/4" paint grade baseboard  
Garage with wind resistant steel door (attic access in garage of single story plan)

## Safety

Installed smoke detectors  
Tornado straps that secure the perimeter walls to rafters  
Carbon Monoxide Sensor

Anchor bolts that secure the perimeter walls to the foundation  
Kwikset Smart Key locks and hardware

## Exterior Finishes

Front and side yard sod  
Landscape package  
Shutters and or dormers (vary per elevation)  
Minimum of two exterior waterproof electric outlets

Concrete patio (vary per plan)  
Two Woodford Freeze-Proof Exterior Water Spigots  
Combo brick exterior on back (partial siding on some plans)  
40-year 110 MPH Shingles

## Warranties

Builder's limited one-year warranty  
Termite company's warranty  
Manufacturer's limited appliance warranty

RWC New Home limited 10-year warranty  
Manufacturer's limited 40-year shingle warranty  
Manufacturer's vinyl siding material warranty

## Kitchen

PEERLESS by Delta kitchen faucet  
Water line for refrigerator icemaker

1/3 horsepower sink garbage disposal  
Gas stove

Buyer's Initials \_\_\_\_\_ Buyer's Initials \_\_\_\_\_ Seller's or its Representative's Initials \_\_\_\_\_

\* Features subject to availability.

Due to constant updates and revisions of our plans, your home may vary slightly from the designs features here. Please consult your New Home Consultant for details.

