



Duxbury Select

Floor Plan: Duxbury Select

Square Feet: 1,600 (m.o.l.) Bedrooms: 4 Bathrooms: 2.0 Garage: 2 Car



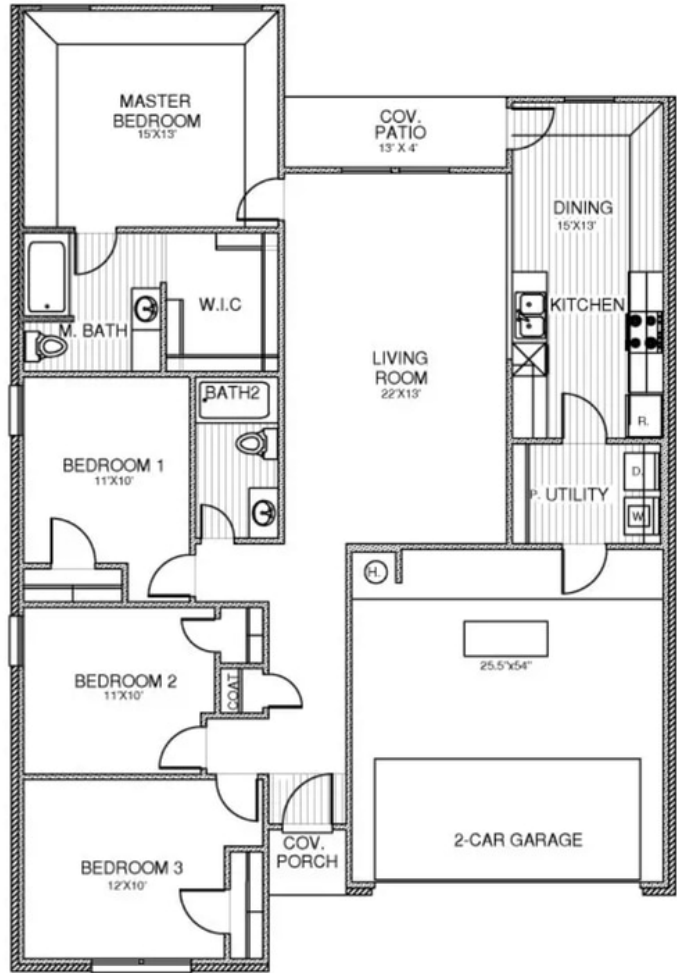
Elevation A



Elevation B

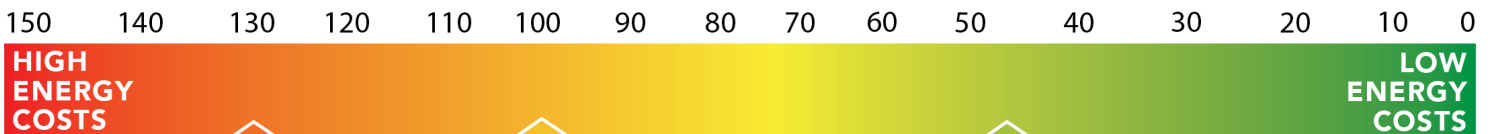


Elevation C



This floor plan with a HERS Index Rating of 47 is:

- 53% more energy efficient than a typical new home
- 83% more energy efficient than a typical existing home



Typical Existing Home

Typical New Home

Colony Fine Homes

Floor plans' specifications, included features, options and elevations are subject to change.





Included Features

Floor Plan: Duxbury Select

Square Feet: 1,600 (m.o.l.) Bedrooms: 4 Bathrooms: 2.0 Garage: 2 Car

Construction / Plumbing / Electrical / Mechanical

Copper electrical wiring
Exterior 2x4 stud-grade lumber walls
Gas heating 96% high efficiency furnace
Heat-taped condensation lines in the attic
RG6 quad shield cable wiring (two cable outlets)
Dupont Tyvek Housewrap air and moisture barrier house wrap
Electric vehicle charging plug (220V 50Amp service; homes permitted after 01/01/2024)

Sheetrock screwed to studs/walls
Uponor AquaPex tubing for water lines
Electric dryer connection in utility room
Protective ground fault interrupter circuits
Category five structured wiring (2 phone outlets)
15.2 SEER electrical central air conditioning (homes with finals after 1/1/2023)

Bathroom

Undermount bathroom sink
PEERLESS by Delta bathroom faucet
1.6 cm Italian marble vanity countertops

Luxury vinyl plank flooring
Fiberglass shower/tub combo in bathrooms

Energy Efficiency

Eave roof ventilation
93% efficient tankless water heater
Insulated and mastic sealed A/C ducts
Gas heating 96% high efficiency furnace
Polycel caulking around windows, doors and joints
R-15 blown-in insulation in external walls; excluding garage

HERS Index Energy Efficiency Rating
R-38 blown-in insulation in the attic
R-19 batt insulation in sloped ceiling
R-8 Perimeter foam insulation under slab
Low-e Thermalpane tilt-in vinyl windows with screen
Energy Star certified home (homes permitted after 01/01/2024)

Interior Finishes

Window sills
Hand textured walls
Laundry cabinet above washer
Upgraded lighting in dining room
Additional shelving in bedroom closets
Insulated entry door (panel style may vary)
Fiberglass full lite back door with blinds insert
10-foot ceilings in kitchen, dining, living, hallway and primary bed
100% PET polyester carpet with level 2 pad in bedrooms & bedroom closets

Garage door opener
3" paint grade baseboards
Pull down attic access in garage
Garage with wind resistant steel door
Finished garage - texture, trim and paint
Upgraded interior doors (2 panel or 5 panel)
Ceiling fan fixture install - living room & primary bed
Luxury vinyl plank flooring (living, hallways, dining, & front entry)
Hardware to include toilet paper holder, towel ring, and 24" towel bar (Satin nickel)

Safety

Installed smoke detectors
Oriented Standard Board (OSB) Exterior Walls
Anchor bolts that secure the perimeter walls to the foundation

Kwikset Smart Key locks and hardware
Tornado straps that secure the perimeter walls to rafters

Exterior Finishes

Full sod
Carriage lights on garage
Concrete patio (vary per plan)
Two Woodford Freeze-Proof Exterior Water Spigots
Brick exterior on front and sides of elevation; siding on back (front accents may apply; varies per plan)

Landscape package
Guttering over front of house
Shutters and or dormers (vary per elevation)
Minimum of two exterior waterproof electric outlets
*Atlas Pinnacle HP42 130 MPH class 3 impact rated shingles with Scotchgard (homes permitted after 09/01/2023)

Warranties

Termite company's warranty
RWC New Home limited 10-year warranty
Manufacturer's vinyl siding material warranty

Builder's limited one-year warranty
Manufacturer's limited appliance warranty
Manufacturer's limited lifetime shingle warranty

Kitchen

Undermount kitchen sink
Kitchen sink garbage disposal
Water line for refrigerator icemaker

Luxury vinyl plank flooring
PEERLESS by Delta kitchen faucet
Stainless-steel Frigidaire appliances including free standing 5 burner gas range, dishwasher, microwave and vent hood

Buyer's Initials _____ Buyer's Initials _____ Seller's or its Representative's Initials _____

* Features subject to availability.

Due to constant updates and revisions of our plans, your home may vary slightly from the designs features here. Please consult your New Home Consultant for details.

